

## HOW TO CAST SCREEN TO TV VIA WIRELESS

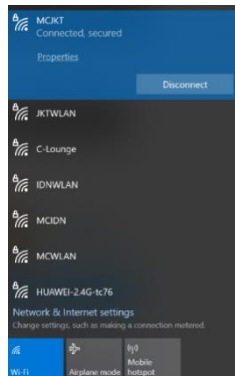
Devices can be connected to TV via wireless by using the following method:

- A. Using Screen Mirroring App
- B. Using Microsoft Edge
- C. Using Screen Mirroring (for Apple devices)

### Prerequisite: Connect to Wireless LAN

**Connect to GUEST MCJKT Wi-Fi.**

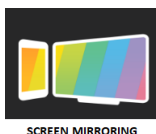
(Please ask the receptionist for the password)



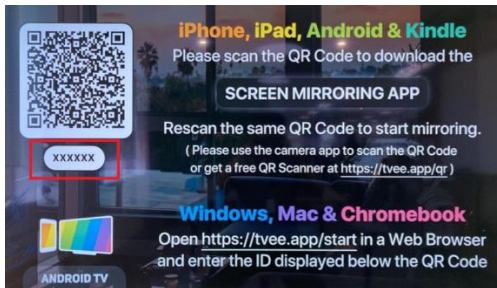
### A. Using Screen Mirroring App

#### A1. Open the Screen Mirroring App.

- ▶ Turn on the smart TV.
- ▶ Open screen mirroring App on the TV.



- Take note of the Code below the QR Code.



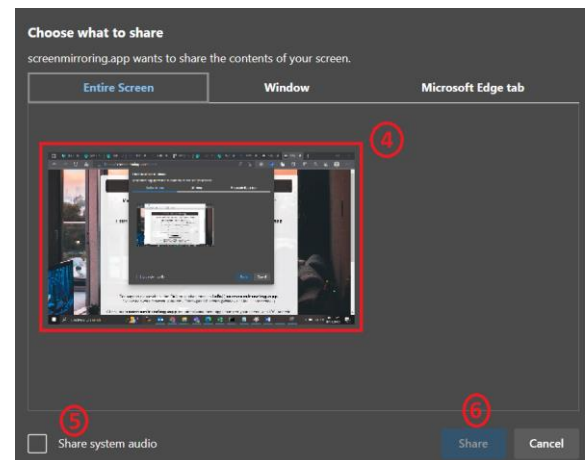
## A2. Access to Website Screen Mirroring

- Open Microsoft Edge Browser from PC.
- Open website <https://tvee.app/start>
- Refer to the Image, input the code on No.1
- Change the resolution to Full on No.2
- Click on Connect button on No.3



After click on Connect button, there will be pop up window.

- Click on no.4 screen to choose the screen we want to share
- If you want to share the Audio also, put check on The box of No.6.
- Click on Share button on No.5 to start share screen.





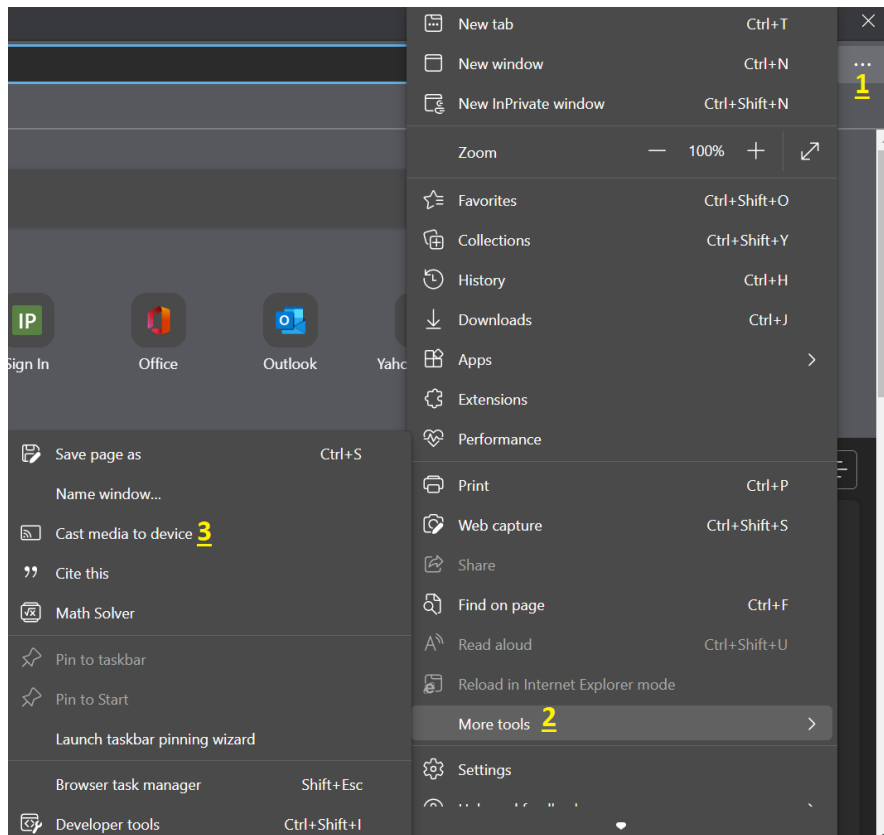
## A3. Stop the screen sharing

- For stopping screen sharing just simply close your browser or click on Disconnect button on the website.



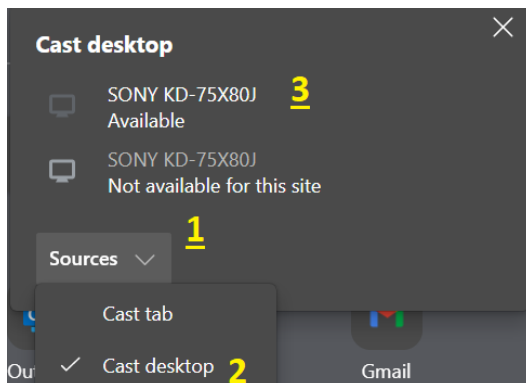
## B. Using Screen Microsoft Edge

- Open Microsoft Edge  Browser from PC.
- Press 3 dots button  on upper right windows.
- Click on “More Tools”
- Choose “Cast Media to device”



- On the upper right, click on Sources

- And then check on “Cast Desktop”
- And then Choose the TV that we want to share.



Info :



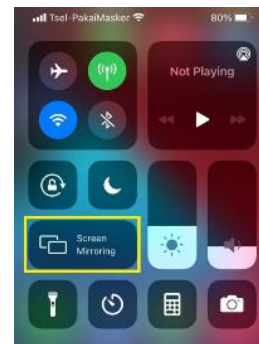
Blue circle means, the TV are currently casting.



White Monitor icon means the tv are available to cast

## C. Using Screen Mirroring (for Apple devices)

- Swipe up your iphone or Ipad to accessing utility screen.
- Choose Screen Mirroring.
- Click on TV name that you want to share with.



- If asking for password, input @Jakarta1 as the password.  
\*device will asking for password only for the first time connecting to TV.

